

Automatic screw feeder

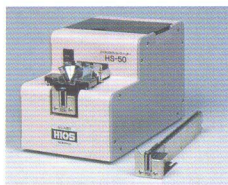
Model selection chart

Automatic screw feeder models (with replaceable rail)	Screw size										Screw transport type	Model features
	M1.0	M1.2	M1.4	M1.7	M2.0	M2.3	M2.6	M3.0	M4.0	M5.0		
HSF Series 	HSF-10	HSF-12	HSF-14	HSF-17	HSF-20		HSF-26	HSF-30			Horizontal transport type	<ul style="list-style-type: none"> ● Slim and compact body ● Can be used with a range of screw sizes
Neji TaroII HS Series 									HS-40	HS-50	Horizontal transport type	<ul style="list-style-type: none"> ● Can be used with two screw sizes
Neji TaroIII HSIII Series 	HSIII-10C	HSIII-12C	HSIII-14C	HSIII-17C	HSIII-20	HSIII-23	HSIII-26	HSIII-30			Horizontal transport type	<ul style="list-style-type: none"> ● Can be used with eight screw sizes
Automatic Neji TaroII HS-RB Series 									HS-40RB	HS-50RB	Horizontal transport type	<ul style="list-style-type: none"> ● Can be used with suction tip
Automatic Neji TaroIII HSIII-RB Series 			HSIII-14 CRB	HSIII-17 CRB	HSIII-20 RB	HSIII-23 RB	HSIII-26 RB	HSIII-30 RB			Horizontal transport type	<ul style="list-style-type: none"> ● Can be used with suction tip

Neji Taro

Speeding up your assembly lines

- A single unit can handle two screw sizes by simply replacing the rail (M4.0 and M5.0).
- The horizontal transport type can handle special screws.



Neji TaroII

HS Series

RoHS CE

HS-40 [M4.0]
HS-50 [M5.0]

- A single unit can handle eight screw sizes by simply replacing the rail (M1.0 to M3.0).
- The horizontal transport type can handle special screws.



Neji TaroIII

HSIII Series

RoHS CE

HSIII-10C [M1.0] HSIII-20 [M2.0]
HSIII-12C [M1.2] HSIII-23 [M2.3]
HSIII-14C [M1.4] HSIII-26 [M2.6]
HSIII-17C [M1.7] HSIII-30 [M3.0]

Specifications

Power (AC Adapter)	Power input	AC100V,115V or 230V (50/60Hz)
	Power output	DC12V 500mA
Dimensions (mm)/weight (kg)	130(W)×215(D)×136(H)/approximately 3.2kg (including the rail)	
Screw capacity	150cc	
Protection circuits	Motor overload stop function	

● Included items/1 installed standard rail, 1 transport plate, 1 hexagonal L-shaped wrench 2mm wide.

Specifications

Power (AC Adapter)	Power input	AC100V,115V or 230V (50/60Hz)
	Power output	DC12V 500mA
Dimensions (mm)/weight (kg)	123(W)×181(D)×145(H)/approximately 3kg (including the rail)	
Screw capacity	80cc	
Protection circuits	Motor overload stop function	

● Included items/1 installed standard rail, 1 transport plate, 1 hexagonal L-shaped wrench 2mm wide, 1 0.35mm gauge board.

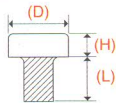
Number of screws that can be supplied

Model		Neji TaroII HS-450		Neji TaroIII HSIII-300							
Model number		HS-40	HS-50	HSIII-10C	HSIII-12C	HSIII-14C	HSIII-17C	HSIII-20	HSIII-23	HSIII-26	HSIII-30
Number of screws that can be supplied	Screw size	M4.0	M5.0	M1.0	M1.2	M1.4	M1.7	M2.0	M2.3	M2.6	M3.0
	Head diameter (D)	4.3~10.7	5.3~10.7	1.2~9	1.4~9	1.6~9	1.9~9	2.2~9	2.5~9	2.8~9	3.2~9
	Head thickness (H)	More than 0.5	More than 0.5	More than 0.35	More than 0.35	More than 0.35	More than 0.35	More than 0.35	More than 0.35	More than 0.35	More than 0.35
	Shaft length (L)	5~18	6~18	1.6~20	1.8~20	2.0~20	2.3~20	2.6~20	2.9~20	3.2~20	3.6~20
Replacement rail model number		R-40	R-50	SR-10	SR-12	SR-14	SR-17	SR-20	SR-23	SR-26	SR-30

The sizes (D), (H) and (L) of screws that can be supplied in the specification chart refers to the following parts.

■ Number of screws that can be supplied

Number of screws that can be supplied	Screw size
	Head diameter (D)
	Head thickness (H)
	Shaft length (L)



Dimensions provided in specification charts

Automatic screw feeder dimensions do not include surface irregularities. See the DXF file for more information.

DXF File



External dimensions can be viewed in DXF file format from the Hios homepage.

*Special software is required to view DXF files.

[Go to Peripheral Units](#) ▶ [Screw Feeders](#) ▶ [DXF File](#)

www.hios.com

HSF

Ultra-slim 55mm design that is ideal for use in cell production.

- A single unit can handle a range of screw sizes by simply replacing the rail.
- The ultra-slim and compact design is ideal for working in confined areas.
- Can be adapted to line changes.
- The transport speed can be adjusted to suit the screws being used.
- A range of inputs (AC 100V to 240V).



HSF Series

RoHS CE

HSF-10 [M1.0]	HSF-20 [M2.0]
HSF-12 [M1.2]	HSF-26 [M2.6]
HSF-14 [M1.4]	HSF-30 [M3.0]
HSF-17 [M1.7]	

■ Specifications

Power (AC Adapter)	Power input	AC100V-240V 50/60Hz
	Power output	DC15V 1A
Dimensions (mm)/weight (kg)	55(W) × 205(D) × 14.25(H)/approximately 2.4kg (including the rail)	
Screw capacity	40cc	

● Included items/1 installed standard rail, 1 hexagonal L-shaped wrench 2mm wide.

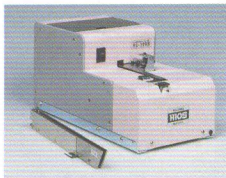
■ Number of screws that can be supplied

Model		HSF-01					HSF-02	
Model number		HSF-10	HSF-12	HSF-14	HSF-17	HSF-20	HSF-26	HSF-30
Number of screws that can be supplied	Screw size	M1.0	M1.2	M1.4	M1.7	M2.0	M2.6	M3.0
	Head diameter (D)	1.2~2.2	1.4~2.5	1.6~2.8	1.9~3.4	2.2~4.2	2.8~5.0	3.2~5.8
	Head thickness (H)	More than 0.35	More than 0.35	More than 0.35	More than 0.35	More than 0.35	More than 0.35	More than 0.35
	Shaft length (L)	1.6~16	1.8~16	2.0~16	2.3~16	2.6~16	3.2~16	3.6~16
Replacement rail model number		WR-10	WR-12	WR-14	WR-17	WR-20	WR-26	WR-30

Neji Taro (for automatic line and vacuum pick up)

Speeding up your automated lines

- A single unit can handle two screw sizes by simply replacing the rail (M4.0 and M5.0).
- A fast supply speed is more than capable of supplying screws to the automated tact (M3 × 8, 120 screws/minute).
- Compatible with suction tips.
- A single unit can handle six screw sizes by simply replacing the rail (M1.4 to M3.0).
- A fast supply speed is more than capable of supplying screws to the automated tact (M3 × 8, 120 screws/minute).
- Compatible with suction tips.



Neji TaroII

HS-RB Series

RoHS CE

HS-40RB [M4.0]
HS-50RB [M5.0]



Neji TaroIII

HS-III-RB Series

RoHS CE

HS-III-14CRB [M1.4]	HS-III-20RB [M2.0]
HS-III-17CRB [M1.7]	HS-III-23RB [M2.3]
	HS-III-26RB [M2.6]
	HS-III-30RB [M3.0]

■ Specifications

Power (AC Adapter)	Power input	AC100V, 115V or 230V (50/60Hz)
	Power output	DC12V 500mA
Dimensions (mm)/weight (kg)	134(W) × 275(D) × 136(H)/approximately 4.2kg (including the rail)	
Screw capacity	150cc	
Protection circuits	Motor overload stop function	

● Included items/1 installed standard rail, 1 transport plate, 1 hexagonal L-shaped wrench 2mm wide, 1 escaping plate.

■ Specifications

Power (AC Adapter)	Power input	AC100V, 115V or 230V (50/60Hz)
	Power output	DC12V 500mA
Dimensions (mm)/weight (kg)	124(W) × 181(D) × 144(H)/approximately 3kg (including the rail)	
Screw capacity	80cc	
Protection circuits	Motor overload stop function	

● Included items/1 installed standard rail, 1 transport plate, 1 hexagonal L-shaped wrench 2mm wide, 1 0.35mm gauge board, 1 escaping plate.

■ Number of screws that can be supplied

Model		Neji TaroII HS-450RB		Neji TaroIII HS-III-300RB					
Model number		HS-40RB	HS-50RB	HS-III-14CRB	HS-III-17CRB	HS-III-20RB	HS-III-23RB	HS-III-26RB	HS-III-30RB
Number of screws that can be supplied	Screw size	M4.0	M5.0	M1.4	M1.7	M2.0	M2.3	M2.6	M3.0
	Head diameter (D)	4.3~10.7	5.3~10.7	1.6~9	1.9~9	2.2~9	2.5~9	2.8~9	3.2~9
	Head thickness (H)	More than 0.5	More than 0.5	More than 0.35	More than 0.35	More than 0.35	More than 0.35	More than 0.35	More than 0.35
	Shaft length (L)	5~18	6~18	2.0~20	2.3~20	2.6~20	2.9~20	3.2~20	3.6~20
Replacement rail model number		R-40RB	R-50RB	SR-14RB	SR-17RB	SR-20RB	SR-23RB	SR-26RB	SR-30RB